



## Witney

Our showstopping Witney sells itself! The ostrich-inspired pattern of this luxurious full-grain leather feels both whimsical and worldly, making it the perfect accent for clients with styles ranging from eclectic to elegant.

### SOLD AS

Individual

### SIZES

Size: 4"L x 6"H

Size: 5"L x 7"H

Size: 8"L x 10"H

### ADDITIONAL INFO

4x6 Frame Size, 6"L x 8"H

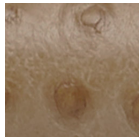
5x7 Frame Size, 7"L x 9"H

8x10 Frame Size, 10"L x 12"H

*This item is handcrafted and may show slight variation from one piece to another.*



### FINISHES & MATERIALS



Oat Brown Ostrich  
Full-Grain Leather PP



Light Gray Ostrich  
Full-Grain Leather PP

Natural Ostrich  
Full-Grain Leather PP